

WHY CIFA



Fivetech Batching Plants



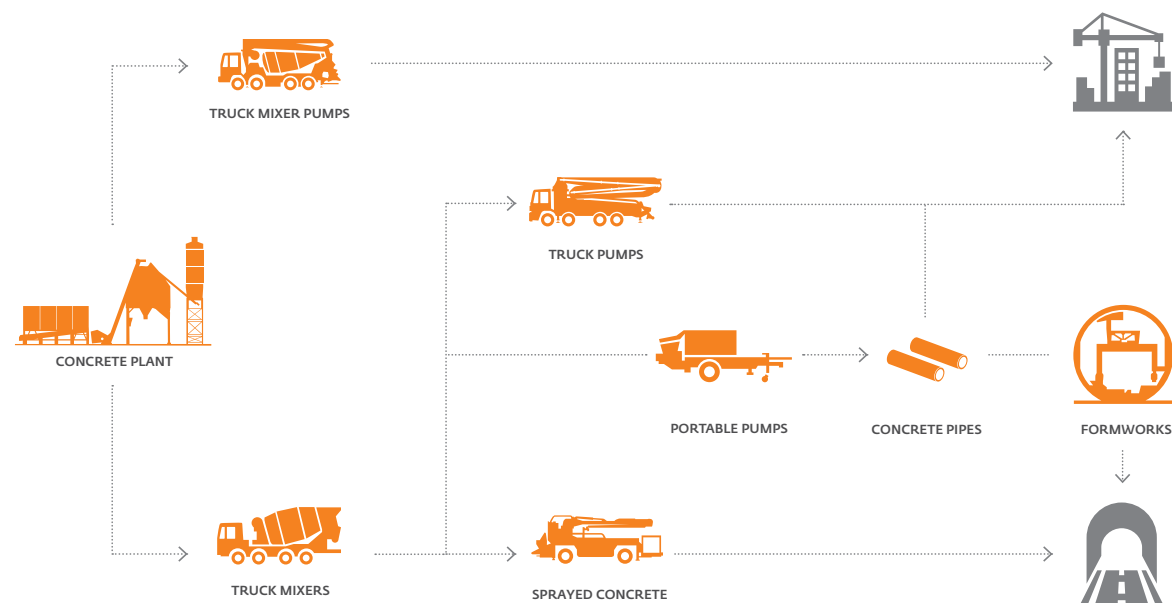
**WHY
CIFA**



A FULL RANGE OF CONCRETE BATCHING TECHNOLOGIES

It started with the very first formworks; then came our batching plants, followed by the creation of our truck mixers and truck mixer pumps. These led to our truck-mounted pumps, portable pumps, and our "spritz" systems, mine mixers and the flooring machines to conclude the widest portfolio of the market. Our product range has grown over the years and will continue to do so, with innovation driving us all the way.

Constantly guided by the motto "driven by innovation", CIFA always undertakes to push technical solution to higher levels, in pursuit of the missing solution that will become the new paradigm for concrete batching, machinery and technology. This is the secret behind some of latest innovations introduced by CIFA such as the hybrid truck Mixer and Mixer Pump; a game changer for sustainability.




Fivetech: the Value of Innovation

Driven by innovation: innovation is our main driving force, that constantly pushes us to create cutting-edge products and design the perfect solution for every challenge. Therefore, we created four new series of concrete batching plants and our range is now enriched and completed with the arrival of **ZIRCON**, **DRY**, **SAPPHIRE** and **DIAMOND** plants.

We chose these names in order to give even more value not only to the products but above all to the people who use them every day, and be closer to your needs.

Transportable and easy to install to be up and running in the shortest possible time, these plants are modular in design according to different usage requirements, and are precise, reliable, equipped with innovative mixing technology and quality materials.

A glimpse into the future using technology that is already a reality: CIFA VISTA.

The telemetry system, now installed in almost all units produced and sold by CIFA, will also be available for the new series of concrete batching plants. It is a unique innovation on the market that will make it possible to trace the entire chain of the concrete used on each site. It is the result of "Made in Italy" creativity.

-  **FIVETECH Diamond**
-  **FIVETECH Sapphire**
-  **FIVETECH Zircon**
-  **FIVETECH Dry**
-  **CIFA Recycling**
-  **CIFA Vista**

5

FIVETECH

5 Reasons why our range of mobile plants reaches record-time installation and significantly cuts the costs of the concrete pillars and foundation works.

The **FIVETECH experience** aims to increase sustainability as an immediate benefit and a long-lasting value.

1.

EASY TRANSPORTATION AND INSTALLATION

All the plants are designed to be handled with standard means of transport and are pre-assembled to ensure they are up and running in the shortest possible time.



2.

MODULAR DESIGN

The single plants are designed to have a flexible and modular design according to customers' different needs.

3.

PRECISE AND RELIABLE DOSING

All the materials involved in the creation of the mixture are accurately dosed to consistently ensure quality outputs over time.



4.

CUTTING-EDGE MIXING TECHNOLOGY

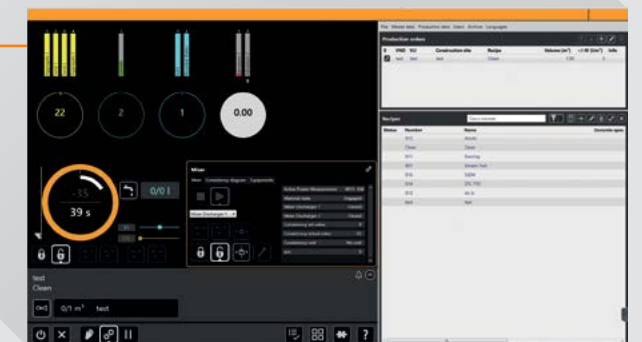
First-class materials and detailed design to ensure a constantly high-quality mixing performance over time and easy maintenance.

5.

ADVANCED CONTROL

Complete operational control that can be integrated with the CIFA Vista monitoring system: an intuitive interface ensures you can fully monitor the activity of the plant and generate accurate reports.

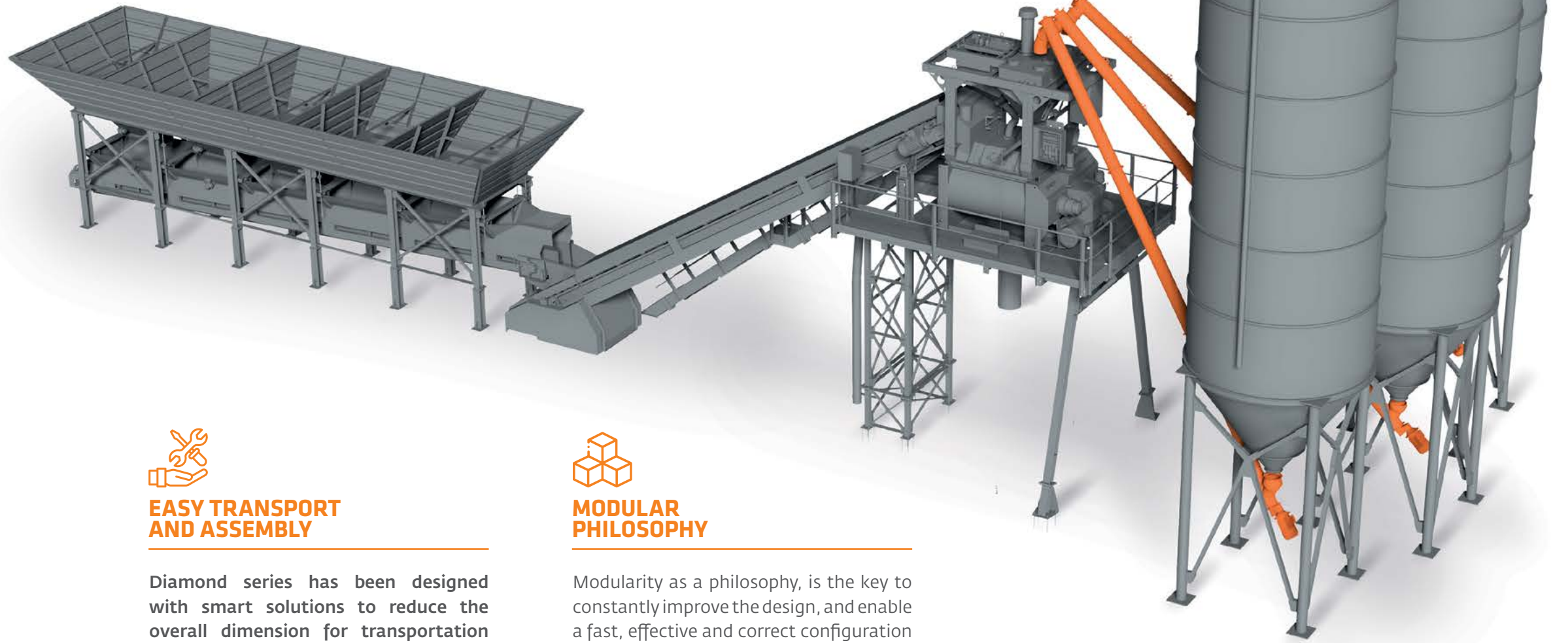
Fivetr@nic





FIVETECH Diamond

Diamond, the most precious stone, is synonymous with the most advanced solutions: five models covering capacities from **50 to 180 m³/h**. The bolted structure is a benchmark in terms of transportability and simplicity of assembly. It features a modular aggregate storage group system, generally from four to six compartments, and with automatic loading systems to improve raw material handling. All configurations feature the leading-edge horizontal twin-shaft mixers with easy maintenance system. **The mixing process is fully and finely automated by the innovative FIVETRONIC system.**



EASY TRANSPORT AND ASSEMBLY

Diamond series has been designed with smart solutions to reduce the overall dimension for transportation and helps to save time and costs using folding structures to fit into standard transportation modules.

Moreover, the bolted structure and the semi-mobile concept allow for easy installation in every type of site quickly and in safe conditions. The electrical system is completely pre-wired, making installation and activation simple and user-friendly.



MODULAR PHILOSOPHY

Modularity as a philosophy, is the key to constantly improve the design, and enable a fast, effective and correct configuration for every kind of quarry or jobsite.

The Diamond Series modules can be combined to create plants covering a range of outputs from 50 to 180 m³/hr, with 3 different bin designs and up to 4 silos.

Moreover, all the components and the frame of the Diamond Series are fully galvanized.



MIXING TECHNOLOGY

The heart of the plant is for sure the mixing device, where precision, reliability and control make the difference. The twin-horizontal axles technology is both powerful and easy to maintain. On top of this, the full automated process not only keeps operations fast and simple but also extremely accurate for high quality concrete. **The Mixers are available with capacities from 1 to 4.5 m³ of concrete outputs per cycle** and with different options to be able to process different types of aggregate.



AGGREGATE BINS

The bolted structure can easily be modified, even on site, to suit the different types of aggregate and storage capacity. **The wider compartment dimension of 3.8 m, is particularly designed for easy loading using a dumper or a HD wheel.**

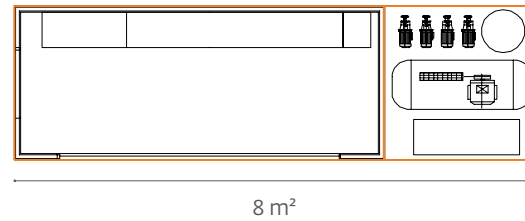
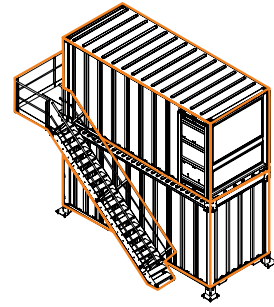
Due to the limited foundations needed, the plant can be easily moved to another site if necessary giving a Diamond plant a second or third life maintaining its value over time.



FIVETECH Diamond

THE DIAMOND CAB

Every plant configuration is completed, upon request, with an operator cabin and a service container featuring all main tools and devices needed day by day, load after load such as: **grease feeding system, air compressor, water tank, water pumps, Super-wash**. The control panel as well as all the service tools are organized in the smartest way to keep the space always clean and efficient with surfaces up to 8 square meters. The standard configuration offers the same spacious control room plus an outdoor service station with everything you need at your fingertips.



FIVETRONIC

Adaptable, efficient, and reliable, the integrated automation system, FIVETRONIC, has a user-friendly interface with all the needed information clearly displayed.

The full process control is always at your fingertips in a sequence view including (loading, weighing, recipe, discharge, washing, production listing, pending orders). To have a predictable and repeatable outcome the software is self-adjusting, and all the production data is recorded and stored in SQL database format providing all details of concrete production.

CIFA VISTA

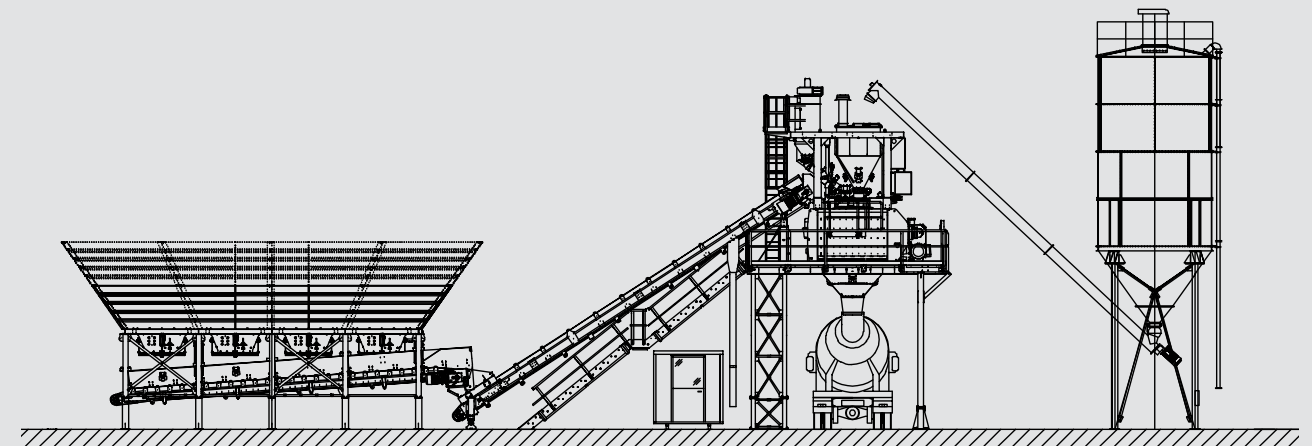
Diamond and FIVETRONIC are fully integrated with the remote-control monitoring system CIFA VISTA.

CIFA VISTA takes your Batching plant into the 4.0 era, tracing all the data

regarding production and quality of the concrete. The system is available for all CIFA products from Truck Mixers to Mixer Pumps and Truck Pumps.

TECHNICAL DATA

		FIVETECH 1500 D	FIVETECH 2500 D	FIVETECH 4000 D	FIVETECH 5000 D	FIVETECH 7000 D
Hourly rated capacity	m ³ /h	50-55	60-70	90-100	130-135	160-180
Capacity per batch	m ³	1.0	1.7	2.5	3.3	4.5
Aggregate bins	nr	4-6	4-6	4-6	4-6	4-6
Aggregate bins capacity	m ³	65-200	65-200	65-200	65-200	52-260
Mixer Horizontal Twin shaft"	model	1502	2502	4002	5001	7001
Discharge height	m	4.2	4.2	4.2	4.2	4.2
Cement silos	nr	up to 4	up to 4	up to 4	up to 4	up to 4
Control	m ²	3.5	3.5	6.3	6.3	8.0



Technical data and characteristics subject to modifications without notice



FIVETECH Sapphire

The Sapphire range is a condensed version of the most advanced solutions but specifically designed to optimize overseas shipment. **Six models covering capacities from 45 to 180 m³/h.** The modular construction for both the main structure as well as the aggregate bins, make Sapphire the right choice in every situation. The horizontal twin-shaft mixers are the standard for all the Sapphire models, providing always great performances. **The mixing process is fully and finely automated by the innovative FIVETRONIC system.**



EASY TRANSPORT AND ASSEMBLY

No boundaries for the Sapphire series. With special anchoring points and frame design to facilitate transportation overseas, no customer will be left behind wherever they are around the world. Onsite installation is quick and easy and the pre-wired electrical system is really adaptable and safe.



MODULAR PHILOSOPHY

Sapphire's modular design can be adapted to every type of quarry. Finding the tailored configuration or moving the plant for a second life to another site is possible without stress as the civil engineering work needed is very limited. To prevent deterioration, the whole plant is finely painted or galvanized. **The modules can be combined to create plants covering a range of outputs from 45 to 180 m³/hr, with 3 different bin designs and up to 4 silos.**



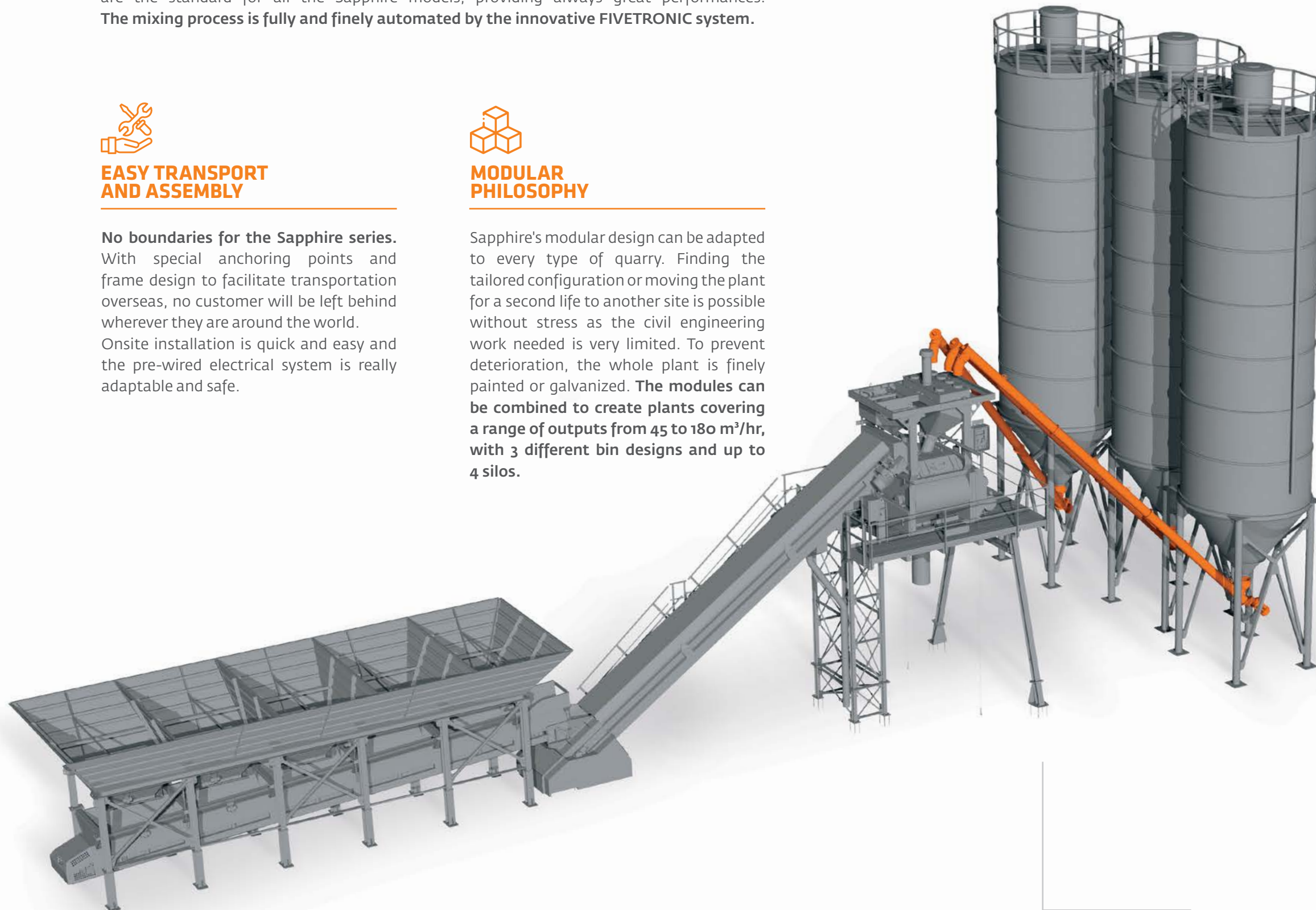
MIXING TECHNOLOGY

Covering a wide range of different solutions, the mixers of the Sapphire range are available with working capacities from 1 to 4.5 m³ per cycle. All models have the horizontal twin-shaft technology, and are both powerful and easy to maintain. CIFA MIXERS will work easily with all types of products and aggregates.



AGGREGATE BINS

The modular structure can easily be modified, even on site, to suit the different types of aggregates and storage capacity. **The wider compartment dimension of 3.8 m, is particularly designed for easy loading using a dumper or a HD wheel.**

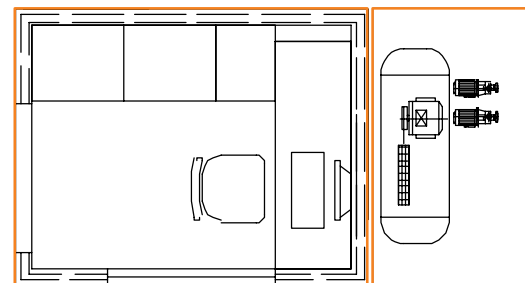
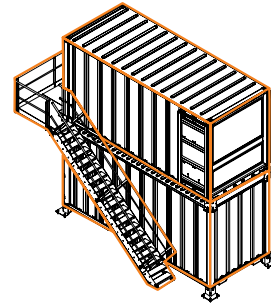




FIVETECH Sapphire

THE SAPPHIRE CAB

The Sapphire series is completed with a control cabin measuring up to 4.5 square meters with the option to choose between the outdoor service station and the service container. Both the operator cabin and a service container featuring all main tools and devices needed day by day, load after load such as: grease feeding system, air compressor, water tank, water pumps, Super-wash. Everything well organized for maximum efficiency.



FIVETRONIC

Adaptable, efficient and reliable, the integrated automation system, FIVETRONIC, has a user-friendly interface with all the needed information clearly displayed. The screen layout and management system is simple to use and program to start operating as quickly as possible.

CIFA VISTA

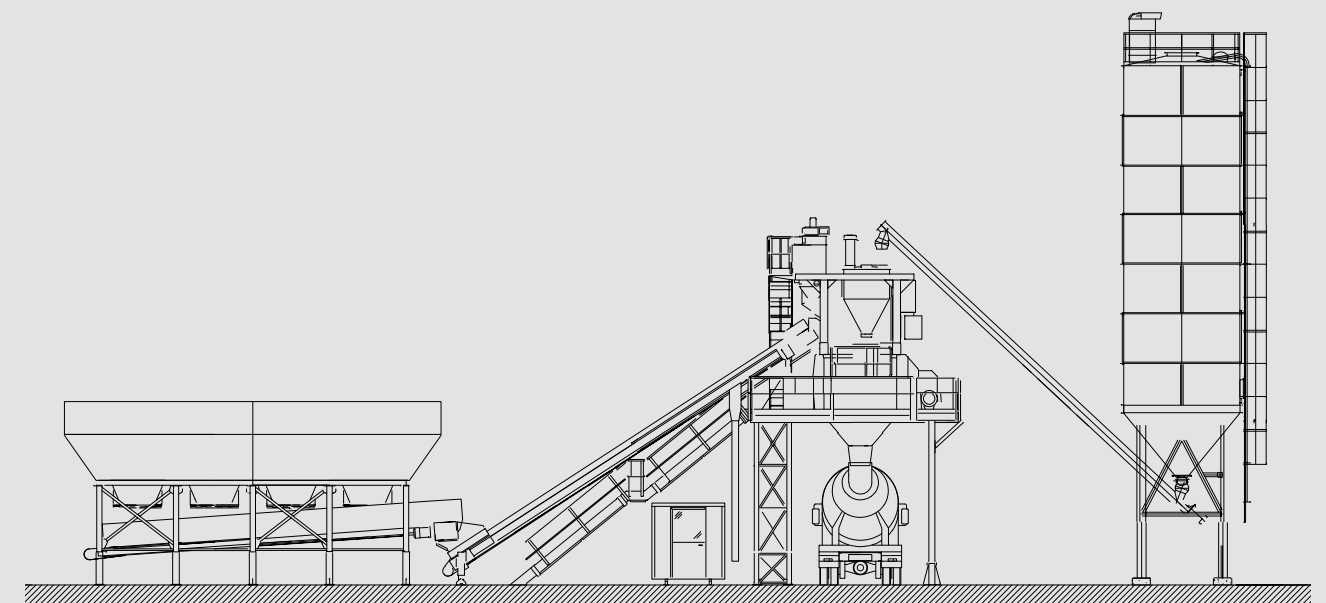
Full integration between FIVETRONIC and the CIFA VISTA remote control monitoring system.

CIFA VISTA takes Your Batching plant into the 4.0 era, tracing all the data

regarding production and quality of the concrete. The system is available for all CIFA products, from Truck Mixers to Mixer Pumps and truck pumps.

TECHNICAL DATA

		FIVETECH 1500 S	FIVETECH 2000 S	FIVETECH 3000 S	FIVETECH 4000 S	FIVETECH 5000 S	FIVETECH 7000 S
Hourly rated capacity	m ³ /h	45-50	55-60	80-90	90-100	130-135	160-180
Capacity per batch	m ³	1.0	1.25	2.0	2.5	3.3	4.5
Aggregate bins	nr	4	4	4-5	4-5	4-5	4-6
Aggregate bins capacity	m ³	40	40	65-100	65-100	65-100	52-260
Mixer Horizontal Twin shaft	model	1501	2001	3001	4001	5001	7001
Discharge height	m	4.2	4.2	4.2	4.2	4.2	4.2
Cement silos	nr	up to 4	up to 4	up to 4	up to 4	up to 4	up to 4
Control	m ²	3.5	3.5	3.5	4.5	4.5	4.5



Technical data and characteristics subject to modifications without notice



FIVETECH Zircon

The Zircon series is an agile solution, featuring the most common configuration used on the market for a multipurpose and quick installation but, nevertheless, covering a wide range of needs. **The four models offer capacities from 45 to 120 m³/h all with modular design and robust structure.** Moreover, the horizontal twin shaft mixer is always the right choice for great quality mixing no matter the type of aggregate.



EASY TRANSPORT AND ASSEMBLY

All Zircon plants are built in modules to be easily transported on standard trucks or containers with no extra costs for deliveries. **The smart design is compact and easy to install in a fast and simple way.** No compromises but the best technologies to be always the best configuration, tailored to the type of site or installation.



MODULAR PHILOSOPHY

The great modular design of the Zircon series is the secret behind the capability to adapt to customer needs without compromises in terms of performance and reliability. **The solid welded structure, is finely painted and designed to be installed with minimum civil engineering.** Being modular, it can be moved or adapted on a second installation with limited modifications.



MIXING TECHNOLOGY

All Zircon plants are equipped with one of the reliable horizontal twin shaft mixers: an absolute guarantee of reliability, power and control of the recipe.

With working capacities from 1 to 3.3 m³/cycle CIFA MIXERS will manage easily all types of aggregates.



AGGREGATE BINS

The aggregate bins capacity goes from 70 to 160 m³ always offering the right combination to the variety of customers' needs. The number of bins starts from 4 up to 5 keeping the configuration flexible to maximize the productivity of the plant.

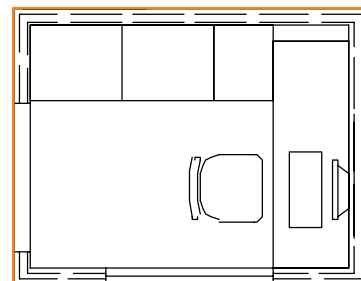
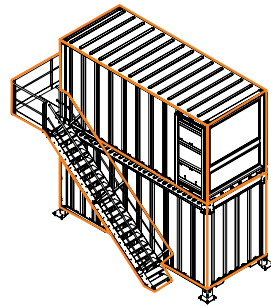




FIVETECH Zircon

MAXIMUM CONTROL

The Zircon series is well completed with the control cabin and the service container. With the dashboard always at your fingertips and the monitor always displaying all information clearly and visibly. Besides the operator cabin, the service container features all main tools and devices needed day by day, load after load such as: **grease feeding system, air compressor, water tank, water pumps, Super-wash.**



FIVETRONIC

Adaptable, efficient, and reliable, the integrated automation system, **FIVETRONIC**, has a **user-friendly interface with all the needed information clearly displayed.** The full process control is always at your fingertips in a sequence view including (loading, weighing, recipe, discharge, washing, production listing, pending orders).

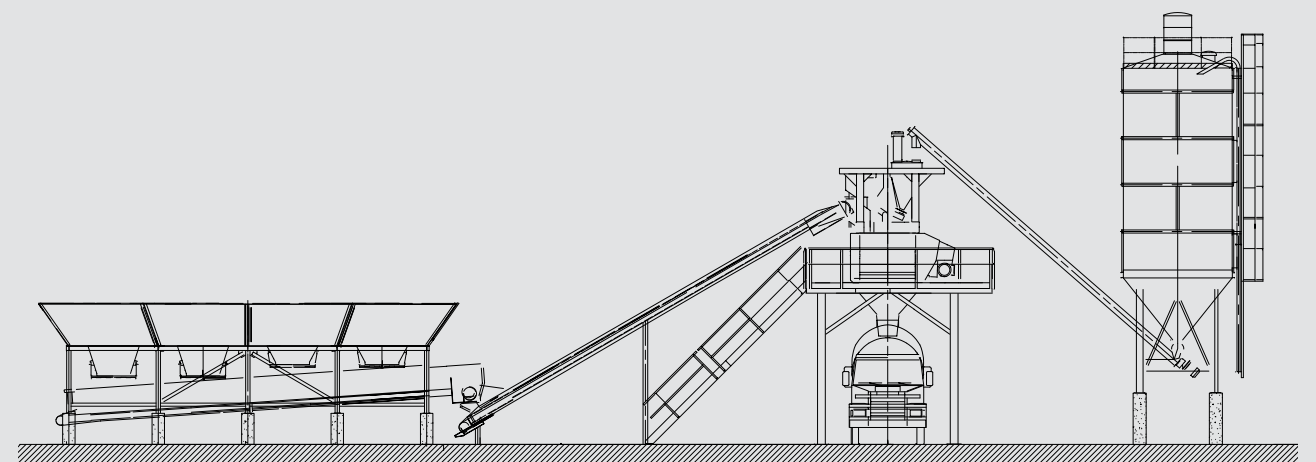
CIFA VISTA

CIFA VISTA takes Your Batching plant into the 4.0 era, tracing all the data regarding production and quality of the concrete.

The system is available for all CIFA products from Truck Mixers to Mixer Pumps and truck pumps. Many different applications but one system.

TECHNICAL DATA

		FIVETECH 1500 Z	FIVETECH 2500 Z	FIVETECH 4000 Z	FIVETECH 5000 Z
Hourly rated capacity	m ³ /h	45-50	60	90	120
Capacity per batch	m ³	1.0	1.7	2.5	3.3
Aggregate bins	nr	4-5	4-5	4-5	4-5
Aggregate bins capacity	m ³	70-160	70-160	70-160	70-160
Mixer Horizontal Twin shaft	model	1502	2502	4002	5001
Discharge height	m	4.2	4.2	4.2	4.2
Cement silos	nr	up to 4	up to 4	up to 4	up to 4
Control	m ²	3.5	3.5	4.30	4.30



Technical data and characteristics subject to modifications without notice



FIVETECH Dry

The series named after its mission: the Dry batch. Limited civil engineering work is required, so this means easy installation, dismantling and the delivery of all the advantages of a semi-mobile plant.

The production capacity covers a range from 40 to 110m³/h; the dosing process is even more reliable and precise thanks to the automation system. Whenever the customer needs a simple batching plant or multi-bins in line solution; the Dry series has a full range of models and configuration with all with dedicated purposes.



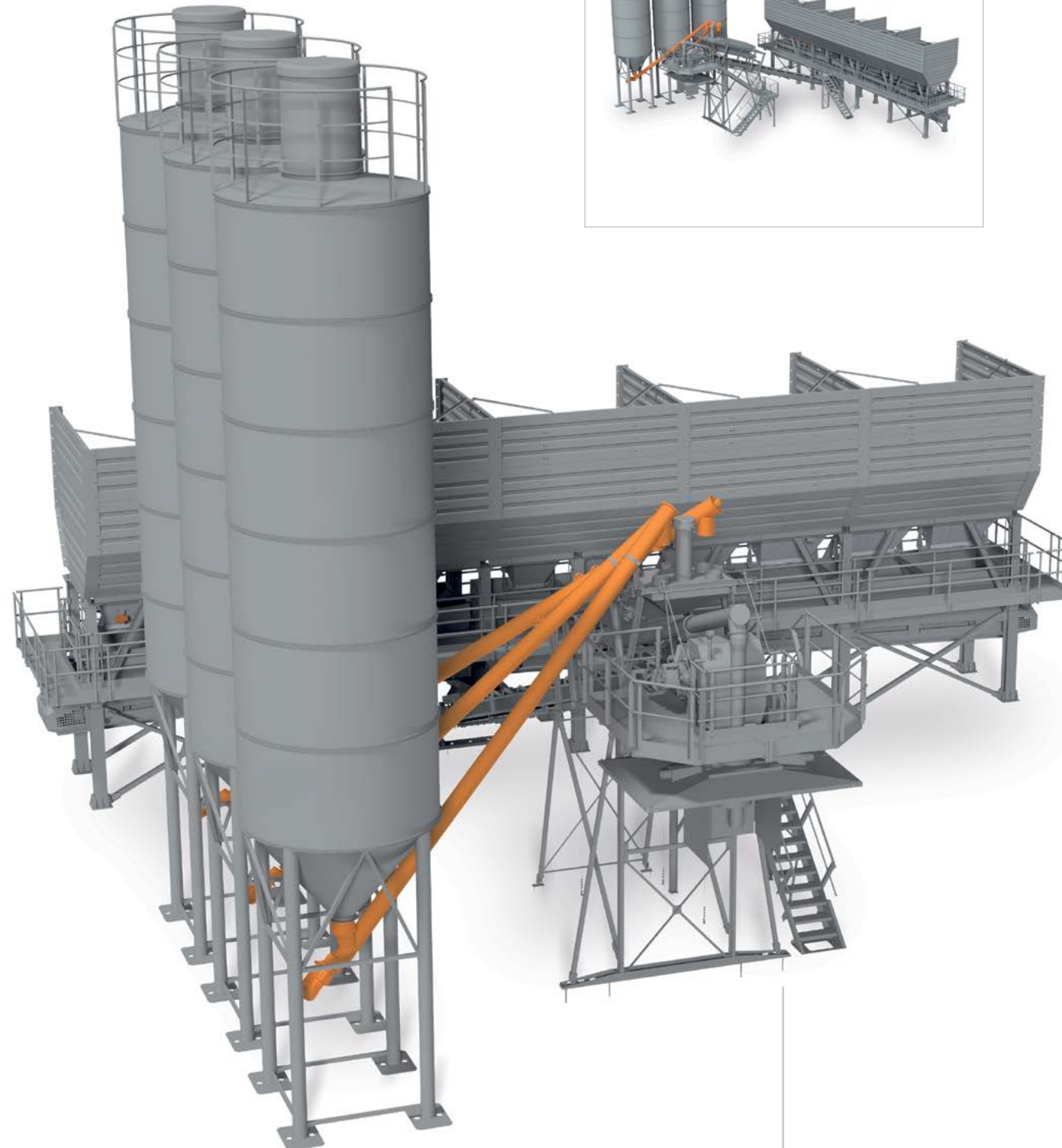
EASY TRANSPORT AND ASSEMBLY

Mobile and easy to transport, the **CIFA FIVETECH - DRY Series** has been designed to fit in a 40' container of a standard truck. The plant can be moved fast everywhere and installed in few days.



MODULAR PHILOSOPHY

CIFA FIVETECH Dry has modularity in its DNA. Whenever the customer requires an extremely compact plant or a multi-batch solution, there is always the right answer. Its versatility, reliability, and robustness as well as its mobility, keeps the value of **CIFA FIVETECH Dry high year after year and is therefore an excellent investment.**



DOSING AND MULTI-BATCHING

CIFA Dry offers the best dosing technologies to reduce raw-material usage and improve the daily job.

The independent dosing system for the cement is installed directly on the loading belt for greater precision. The plant is also equipped with modular aggregate bins and filtering system for powders. Simple solutions that are effective in every situation.



AGGREGATE BINS

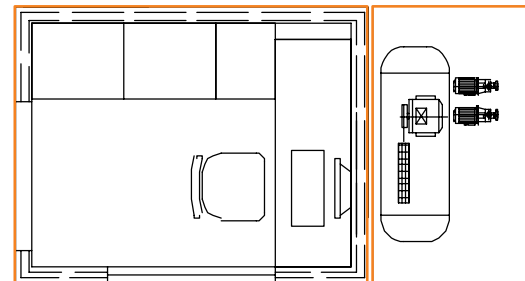
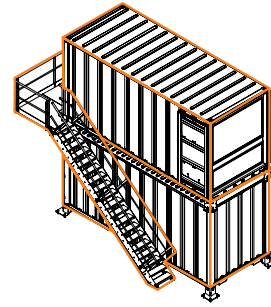
CIFA Dry Series can be equipped with 3 different types of aggregate groups with up to 6 compartments. A specially designed of 3.8m wide bins further facilitates the loading process, thus increasing productivity.



FIVETECH Dry

THE CONTROL STATION

CIFA DRY has, undoubtedly, the perfect control room: smart, well-organized, everything is in a compact solution but with no compromises. Moreover, it can be equipped with a service container featuring all main tools and devices needed day by day, load after load such as: grease feeding system, air compressor, water tank, water pump.



FIVETRONIC

Adaptable, efficient and reliable, the integrated automation system, FIVETRONIC, has a user-friendly interface with all the needed information clearly displayed.

One tool to manage and program all operations and store all the batching data. One tool to manage and program all operations and store all the batching data.

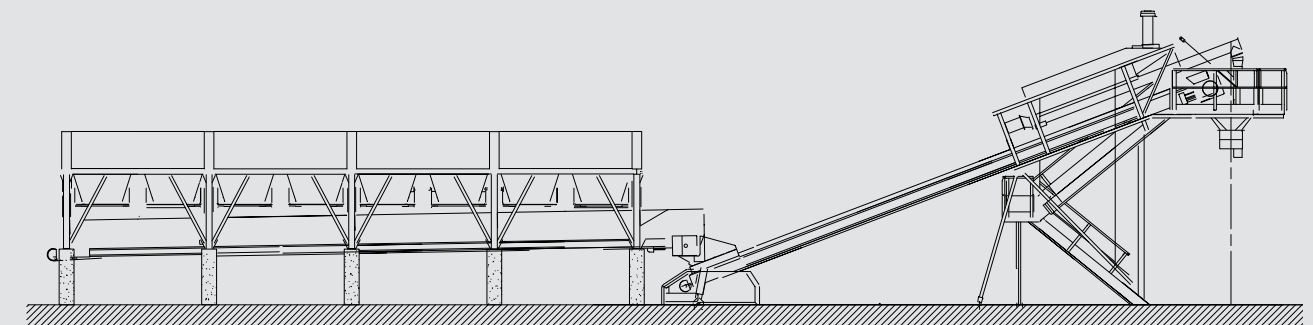
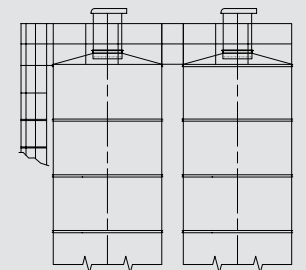
CIFA VISTA

CIFA VISTA takes Your Batching plant into the 4.0 era, tracing all the data regarding production and quality of the concrete.

The system is available for all CIFA products from Truck Mixers to Mixer Pumps and truck pumps.

TECHNICAL DATA

		FIVETECH 40 Dry	FIVETECH 70 Dry	FIVETECH 100 Dry
Hourly rated capacity	m ³ /h	40-50	70-80	100-110
Capacity per batch	m ³	8	3-5	4-5
Aggregate bins	nr	1	4-6	4-6
Aggregate bins capacity	m ³	10	65-200	52-260
Dosing system		Automatic	Automatic	Automatic
Control cabin	m ²	2.0	4.0	4.0



Technical data and characteristics subject to modifications without notice

Sustainability is always a good choice when talking about productivity and raw-material optimization. The CIFA WASH and CIFA AQUATECH systems are great allies to every Batching plant. With the simplicity of installation and use, CIFA WASH allows you to process excess concrete and slurry waters quickly and effectively, separating solids up to 0.15 mm.

The main benefits of the whole recycling system are, above all:

- Truck Mixers and Pumps always perfectly clean and efficient
- Recycled water for the Batching plant
- Recycled aggregate



CIFA WASH

Two different models, one with a capacity of 11 m³ and the second up to 25 m³. CIFA WASH can operate with truck mixers and pumps. The auger can process solids up to 0.15 mm to cover all types of excess concrete or slurry water. The unit has a removable cover which enables for quick access for cleaning and maintenance.



EASY TRANSPORT AND ASSEMBLY

The Recycling series are designed to be easily transported reducing timing and cost of delivery. The main modules are quickly set up and activated.

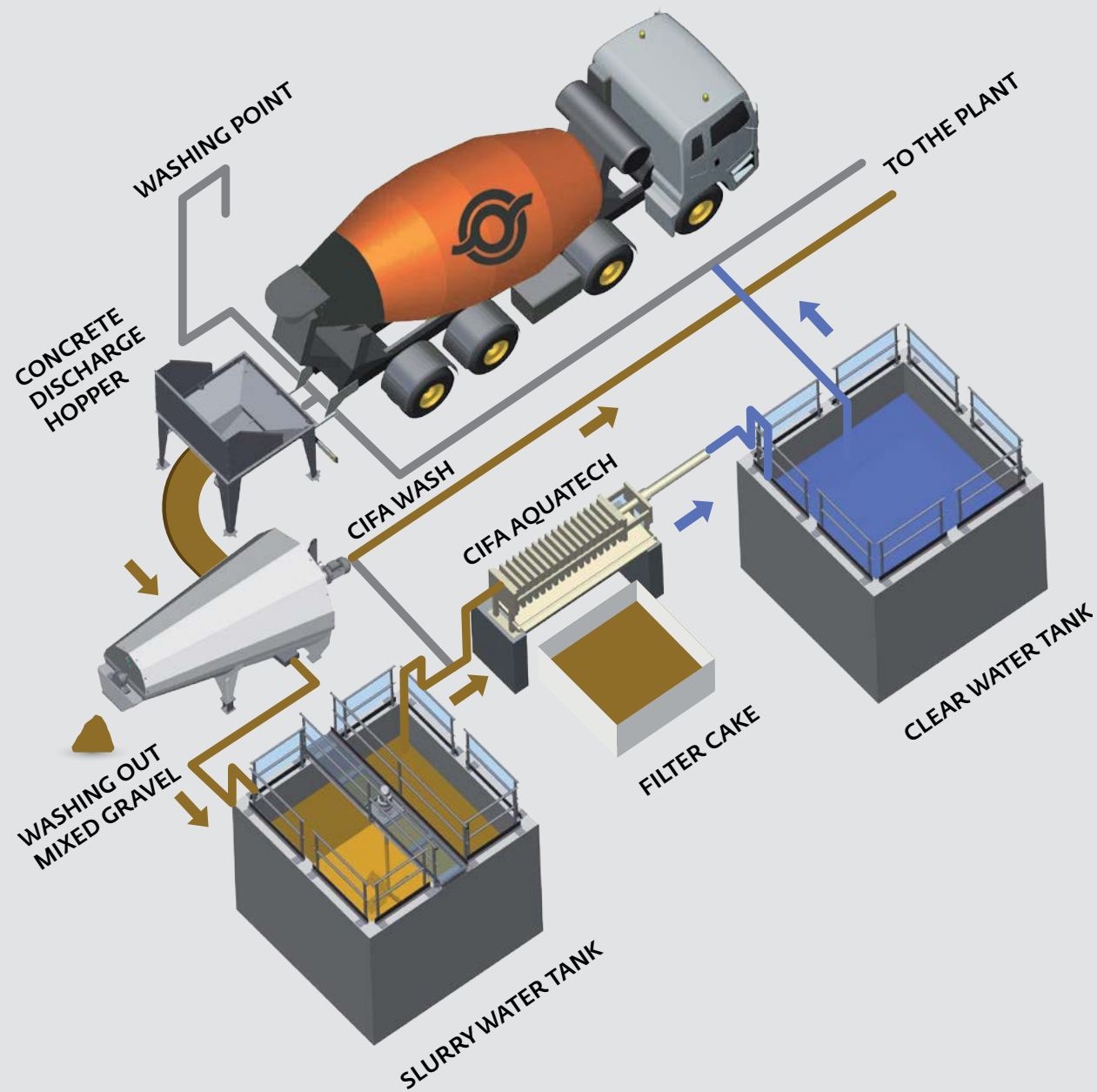
CIFA AQUATECH

The unique filtering system of CIFA AQUATECH will deliver crystal clear water after the CIFA WASH process. **Capacity goes from 1.5 to 4 m³/h recycling water for the Batching plant.**



CIFA Wash | CIFA AquaTech

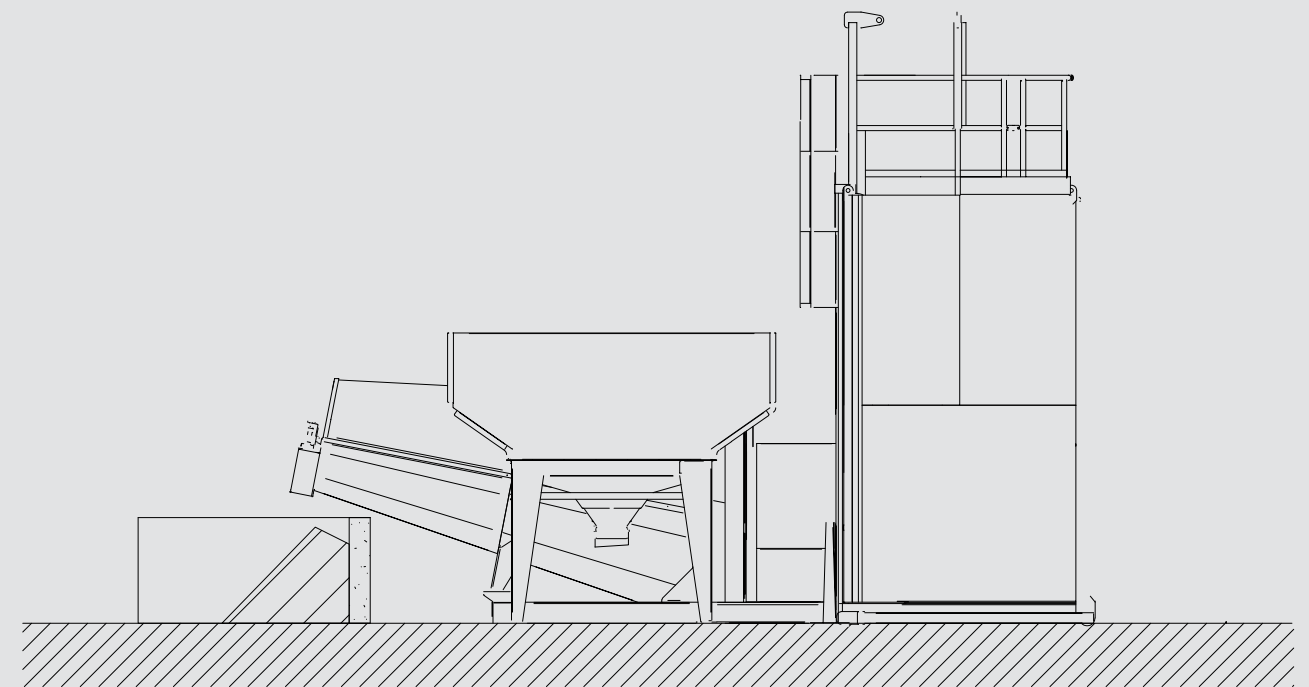
An integrated system to increase efficiency in a simple and always effective way. The solid is rapidly separated from the slurry water which has just been cleaned by the filter press, **CIFA AQUATECH**, and is ready to be re-used in the batching process.



TECHNICAL DATA

CIFA WASH		CW 110	CW 250
Separation	mm	0.15	0.15
Slurry water tank	m ³	33-100	33-100
Maximum washout	m ³ /h	11	25

CIFA AQUATECH		AQUATECH 10	AQUATECH 20
Slurry water capacity	m ³ /h	1.5	4.0
Filtering surface	m ²	3.6	9.0



Technical data and characteristics subject to modifications without notice

CIFA PRESENTS VISTA

The telemetry system made by CIFA has now brought the transport and pumping of concrete into the age of digitalisation, and today also includes the preparation of Readymix concrete.

Essential for managing the company's increasingly large fleets, as well as for remote control and assistance, it is a tool that expands opportunities for work efficiency and helps improve sustainability. In detail, **CIFA VISTA** records and saves in the cloud all the data available and processed by the machine or plant control unit.



VISTA HIGHLIGHTS



AFTER SALES SUPPORT MANAGEMENT

Streamlined data sharing between customers, dealers and CIFA.



PREVENTIVE MAINTENANCE

Monitor the usage of machines and schedule maintenance in advance.



TROUBLESHOOTING

Get real time and stored diagnostic messages.



FLEET MONITORING

Analyze real-time and stored data easily, monitor productivity and costs, anti-theft.

It is therefore possible not only to geolocate each product using the integrated **GNSS** antenna, but also monitor every aspect of use or performance in detail. For example, fuel consumption can be compared over time and in relation to work sessions. It is a simple way to collect and process complex data to be made readable and usable in real time or years later.

In addition, the system is a key ally for routine maintenance or remote assistance or for simple operating system updates.

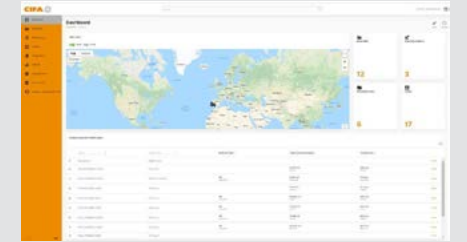
With the new range of **FIVETECH** plants, **CIFA VISTA** will be again a game changer in the world of concrete. This new technology will integrate the systems mounted on vehicles; be they concrete mixers, pumps or truck mounted concrete pumps; with the batching plant. The entire concrete preparation and pumping process will thus be traced, creating the first certified concrete supply chain from the raw aggregate to the construction site.



PRODUCTION CHAIN MONITORING

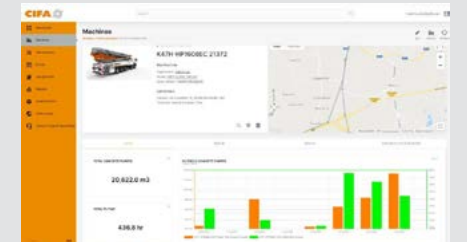
Tracing the complete chain of concrete preparation and pumping.

EVERYTHING IN ONE PLACE



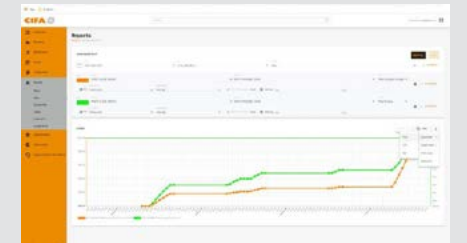
Fleet management

Each customer has a full view over his fleet shared with his dealer and CIFA.



Dashboard view

Main data for each machine is presented with graphics: GPS data - Pumped m³ - Pumping hours - Fuel used - Km travelled Business-critical data is presented in a clear way to improve efficiency.



Reports

Hundreds of machine parameters can be selected and analyzed over a customizable timeframe. Data may be then plotted, printed or exported.



Machine view

Machine health status is monitored and notifications are managed.



Distributor



CIFA S.p.A.

Via Stati Uniti d'America, 26
20030 Senago (Milano) - Italy
tel. +39.02.990131
fax. +39.02.9981157

sales@cifa.com
www.cifa.com

